

---

---

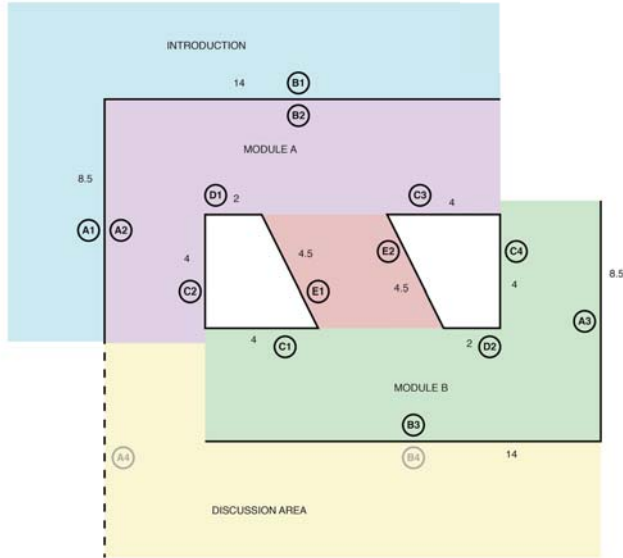
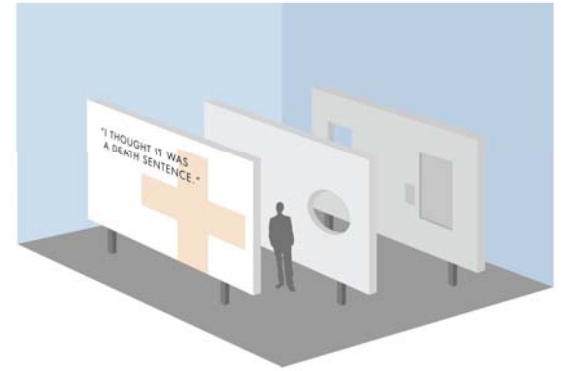
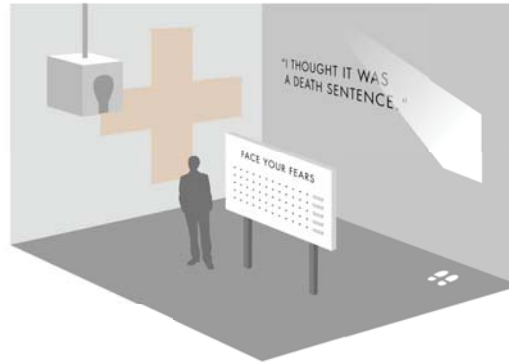
# Still Surviving

— Main Event —

---

---

# Old Exhibition

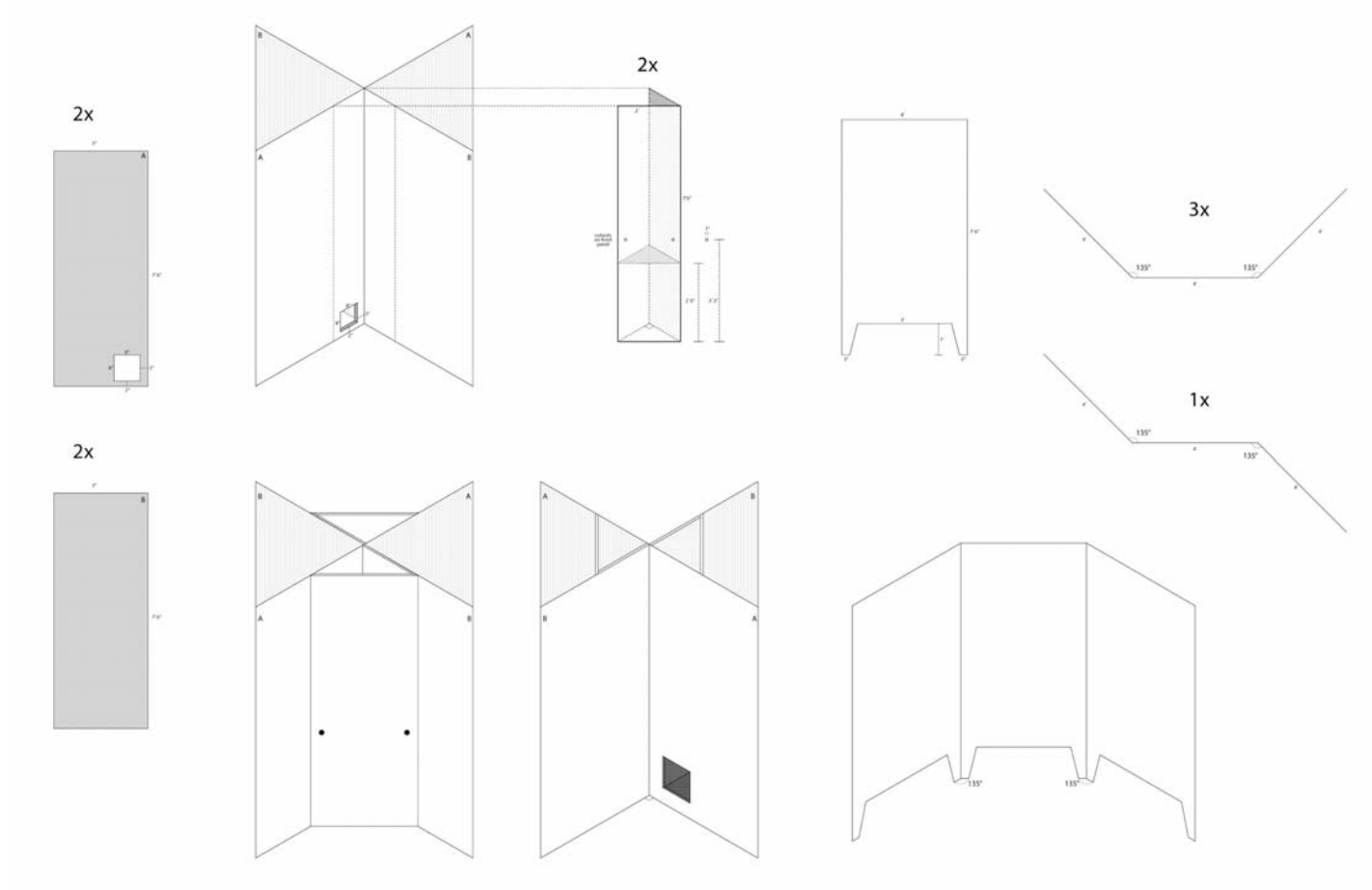


# What We Had to Cut

- an “enterable space”
- projectors
- lights
- changed from revolving content to static content



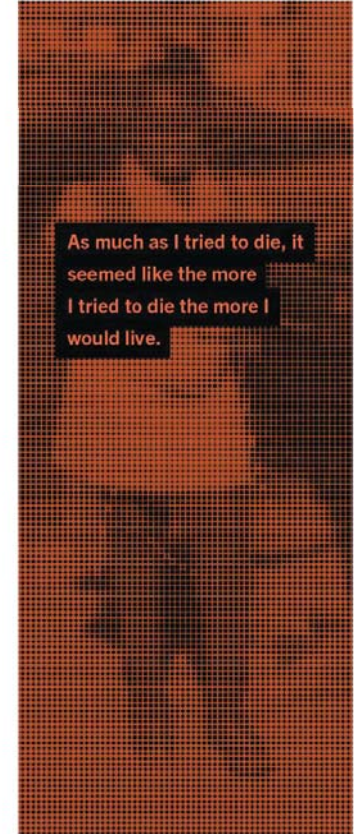
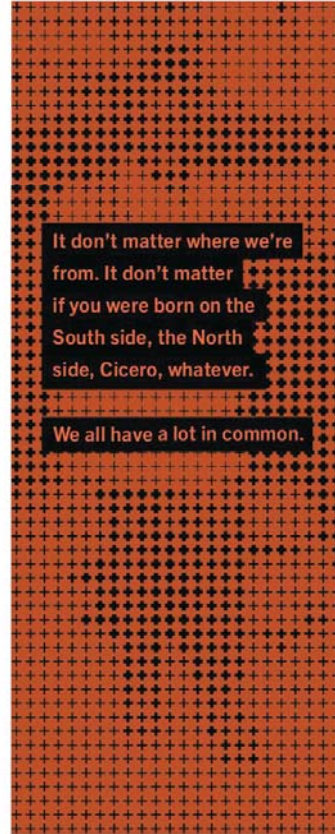
# Dimensions for New Exhibit



# Media Column: Walls

These walls will be placed in the Early Life and Diagnosis sections.

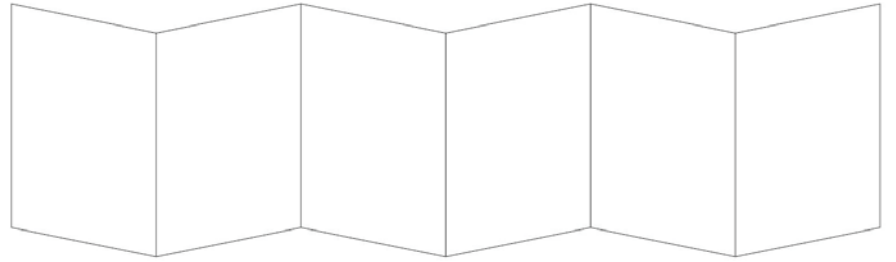
Create a visual impact



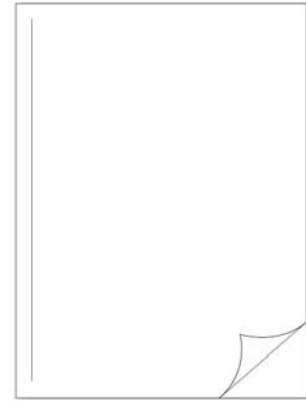
# Media Column: Book

The book will be split into its respective four sections

Two formats



Accordion Fold : 8.5in x 66in



Large Format : 11in x 15in

# Things to Do

- Assemble Graphics
- Print Accordion and Large Format Books
- Set up Audio